

Vaar is a Monegasque Brand specialized in custom handmade luxury furniture for interior and outdoor projects, characterized by iconic yachting-type products manufactured in limited editions. Each product is a piece of excellence in design where proportion and essentiality of forms depend on a mixture between the know-how of the design team and the art of the handcrafted production. This is made possible thanks to long-term collaboration with a pool of the best traditional Italian craftsmen.

The Brand has a strong custom aptitude working one-on-one in every step of the design process, from the first conceptual sketch to the final delivery, designing and realizing a bespoke project or customizing each single item to the Client's requirements. Some appreciated Vaar furniture were born from custom projects.

VAAR

BAR CHAIRS

COFFEE AND LAMP TABLES

CONSOLES

DINING CHAIRS

LOUNGE CHAIRS

SOFAS

STOOLS AND OTTOMANS

SUN BEDS



In the picture: VBC01 in polished and matt steel , waterseals teak, custom fabric

BAR CHAIRS

VBC01 Bellini

The bar chair is the perfect complement to the Bellini luxury yacht dining set. The frame is handcrafted in metal, the backrest and the armrests can be in wood and/or upholstered in soft materials.

MATERIALS

Metals:
 Polished or matt steel 316L
 Steel > high gloss or satin custom colors
 Titanium > high gloss or satin custom colors

Woods:
 Teak > waterseals, oiled, high gloss
 Mahogany > oiled, satin, high gloss
 Custom wood

Soft materials:
 Marine leather > plain, weaved, custom
 Custom leather
 Custom fabric

SIZE

Width	54 cm
Seat Width	46 cm
Depth	51 cm
Seat Depth	50 cm
Height	110.5 cm
Seat Height	75 cm
Seat Height with cushion	81 cm
Arm Height	93.5 cm

(Custom dimensions on request)





In the picture: VBC02 in polished steel, stitched leather, custom fabric

BAR CHAIRS

VBC02 Bellini

Created to a Client specification, the bar chair is the perfect complement to the Bellini luxury yacht dining set. The frame is handcrafted in metal, the backrest and the armrests can be in wood and/or upholstered in soft materials.

MATERIALS

Metals:
 Polished or matt steel 316L
 Steel > high gloss or satin custom colors
 Titanium > high gloss or satin custom colors

Woods:
 Teak > waterseals, oiled, high gloss
 Mahogany > oiled, satin, high gloss
 Custom wood

Soft materials:
 Marine leather > plain, weaved, custom
 Custom leather
 Custom fabric

SIZE

Width	54 cm
Seat Width	46 cm
Depth	51 cm
Seat Depth	50 cm
Height	110 cm
Seat Height	75 cm
Seat Height with cushion	81 cm
Arm Height	94 cm

(Custom dimensions on request)





In the picture: VBC03 in lacquered titanium, oiled teak , fabric and stitched leather

BAR CHAIRS

VBC03 Colombe

The bar chair is a complement to the dining chairs in the yachting interior or exterior. Seat and backrest can be conceived as one single piece produced in custom fabric and stitched leather or in a more classic soft materials upholstery. The armrests can be covered in wood and/or in soft material.

MATERIALS

Metals:
 Polished or matt steel 316L
 Steel > high gloss or satin custom colors
 Titanium > high gloss or satin custom colors

Woods:
 Teak > waterseals, oiled, high gloss
 Mahogany > oiled, satin, high gloss
 Custom wood

Soft materials:
 Marine leather > plain, weaved, custom
 Custom leather
 Custom fabric

SIZE

Width	52 cm
Seat Width	49 cm
Depth	44.5 cm
Seat Depth	43.5 cm
Height	116 cm
Seat Height	75 cm
Seat Height with cushion	77 cm
Arm Height	97 cm

(Custom dimensions on request)





In the picture: VBC04 in polished steel, stitched leather, custom fabric

BAR CHAIRS

VBC04 Hilary

Bauhaus modernism is the design reference for Hilary's seamless metal frame: the furniture signature in the bar chair, the lounge chair and the ottoman. The armrests can be covered in wood and/or stitched leather. Backrest with metal or wooden slats or upholstered in soft material.

MATERIALS

Metals:
 Polished or matt steel 316L
 Steel > high gloss or satin custom colors
 Titanium > high gloss or satin custom colors

Woods:
 Teak > waterseals, oiled, high gloss
 Mahogany > oiled, satin, high gloss
 Custom wood

Soft materials:
 Marine leather > plain, weaved, custom
 Custom leather
 Custom fabric

SIZE

Width	48 cm
Seat Width	40 cm
Depth	47 cm
Seat Depth	43 cm
Height	98 cm
Seat Height	71 cm
Seat Height with cushion	76 cm
Arm Height	85 cm

(Custom dimensions on request)





In the picture: VBC05 in matt steel, waterseals teak, custom fabric

BAR CHAIRS

VBC05 Burano

The handcrafted grating is the Burano design file rouge combined with metal frame and wooden covered footrest and supports in the bar chair. Seat cushion and pillow are upholstered in soft material. Wood slats are available for the backrest.

MATERIALS

Metals:
 Polished or matt steel 316L
 Steel > high gloss or satin custom colors
 Titanium > high gloss or satin custom colors

Woods:
 Teak > waterseals, oiled, high gloss
 Mahogany > oiled, satin, high gloss
 Custom wood

Soft materials:
 Marine leather > plain, weaved, custom
 Custom leather
 Custom fabric

SIZE

Width	48 cm
Seat Width	40 cm
Depth	47 cm
Seat Depth	42.5 cm
Height	112 cm
Seat Height	75 cm
Seat Height with cushion	81 cm
Arm Height	98 cm

(Custom dimensions on request)





In the picture: VBC06 in lacquered titanium, soft material, stitched leather

BAR CHAIRS

VBC06 Hilary

Bauhaus modernism is the design reference for Hilary seamless metal backrest and footrest: the furniture signature in the swivel bar chair. The armrests can be covered in wood or stitched leather. Backrest available with metal or wooden slats or upholstered in soft materials.



MATERIALS

Metals:
 Polished or matt steel 316L
 Steel > high gloss or satin custom colors
 Titanium > high gloss or satin custom colors

Soft materials:
 Marine leather > plain, weaved, custom
 Custom leather
 Custom fabric

SIZE

Width	48 cm
Seat Width	40 cm
Depth	47 cm
Seat Depth	42.5 cm
Height	112 cm
Seat Height	75 cm
Seat Height with cushion	81 cm
Arm Height	98 cm

(Custom dimensions on request)



In the picture: VBC07 in polished steel, ebony macassar, stitched leather

BAR CHAIRS

VBC07 Kalatrava

The Kalatrava bar chair adds to the Vaar collection its unique elegant style made by the contrast between the wooden curved armrests, the shining metal structure and the softness of the upholstery. Armrests can be covered in stitched leather.

MATERIALS

Metals:
 Polished or matt steel 316L
 Steel > high gloss or satin custom colors
 Titanium > high gloss or satin custom colors

Woods:
 Teak > waterseals, oiled, high gloss
 Mahogany > oiled, satin, high gloss
 Custom wood

Soft materials:
 Marine leather > plain, weaved, custom
 Custom leather
 Custom fabric

SIZE

Width	54 cm
Seat Width	45 cm
Depth	50 cm
Seat Depth	46 cm
Height	105 cm
Seat Height	70 cm
Seat Height with cushion	76 cm
Arm Height	93 cm

(Custom dimensions on request)



VAAR

BAR CHAIRS

COFFEE AND LAMP TABLES

CONSOLES

DINING CHAIRS

LOUNGE CHAIRS

SOFAS

STOOLS AND OTTOMANS

SUN BEDS



In the picture: VCT01 in oiled mahogany

COFFEE AND LAMP TABLES

VCT01 Vera

Vera is a complete coffee tables, lamp tables and console collection suitable for yacht as well as for residential lay out. Each item featuring geometrical, squared or circular wooden top combined with essential cruciform support, is a must-have, easy customizable complement.

MATERIALS

Woods:
 Teak > waterseals, oiled, high gloss
 Mahogany > oiled, satin, high gloss
 Custom wood

SIZE

Diameter	60 cm
Height	30 cm

(Custom dimensions on request)





In the picture: VCT02 in polished steel, black satin mahogany

COFFEE AND LAMP TABLES

VCT02 Arpa

With its essential geometric shape, Arpa coffee table is the perfect complement to a seating collection conceived as contemporary reinterpretation of Joseph Hoffmann design furniture. The black circular wooden top stand on a metal cylindrical support.

MATERIALS

Metals:
 Polished or matt steel 316L
 Steel > high gloss or satin custom colors
 Titanium > high gloss or satin custom colors

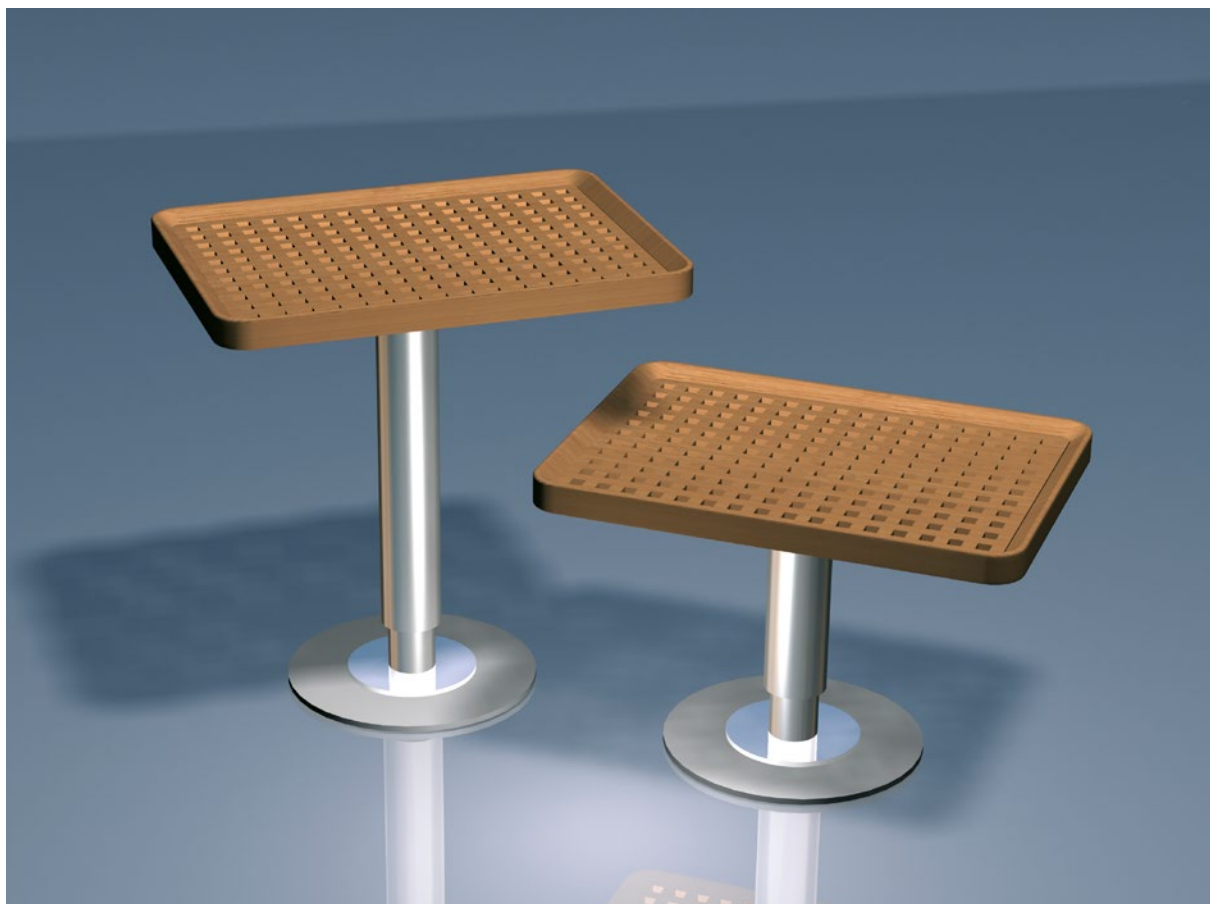
Woods:
 Teak > waterseals, oiled, high gloss
 Mahogany > oiled, satin, high gloss
 Custom wood

SIZE

Width/Diameter	50 cm
Height	60/85 cm

(Custom dimensions on request)





In the picture: VCT03 in teak grating, polished steel

COFFEE AND LAMP TABLES

VCT03 Burano

The grating, a traditional nautical handcrafted carpentry, is the Burano design file rouge, combined with an essential metals support in a must-to-have and everywhere-setting coffee table.

MATERIALS

Metals:
 Polished or matt steel 316L
 Steel > high gloss or satin custom colors
 Titanium > high gloss or satin custom colors

Woods:
 Teak > waterseals, oiled, high gloss
 Mahogany > oiled, satin, high gloss
 Custom wood

SIZE

Width	60/80 cm
Depth	60 cm
Height	60/85 cm

(Custom dimensions on request)





In the picture: VCT04 in polished steel, waterseals teak, stitched leather

COFFEE AND LAMP TABLES

VCT04 Colombe

The folding coffee table is a flexible, light complement, easily movable and useful in the yachting interiors and exteriors, as well as in hotel lounge or in private houses. It is preciously handcrafted and upholstered using a perfect combination of metal, wood and soft material. The tray is removable.

MATERIALS

Metals:
 Polished or matt steel 316L
 Steel > high gloss or satin custom colors
 Titanium > high gloss or satin custom colors

Woods:
 Teak > waterseals, oiled, high gloss
 Mahogany > oiled, satin, high gloss
 Custom wood

Soft materials:
 Marine leather > plain, weaved, custom
 Custom leather
 Custom fabric

SIZE

Width	60 cm
Folded Width	44.5 cm
Depth	50 cm
Folded Depth	16 cm
Height	48 cm
Folded Height	71 cm

(Custom dimensions on request)





COFFEE AND LAMP TABLES

In the picture: VCT05 in matt steel, waterseals teak

VCT05 Burano

The grating, a traditional nautical handcrafted carpentry, is the Burano design file rouge in the folding coffee table, combined with steel or lacquered titanium frame and soft material top. The grating tray is removable.

MATERIALS

Metals:
 Polished or matt steel 316L
 Steel > high gloss or satin custom colors
 Titanium > high gloss or satin custom colors

Woods:
 Teak > waterseals, oiled, high gloss
 Mahogany > oiled, satin, high gloss
 Custom wood

Soft materials:
 Marine leather > plain, weaved, custom
 Custom leather
 Custom fabric

SIZE

Width	60 cm
Folded Width	44.5 cm
Depth	50 cm
Folded Depth	16 cm
Height	48 cm
Folded Height	71 cm

(Custom dimensions on request)





In the picture: VCT06 in waterseals teak, polished steel

COFFEE AND LAMP TABLES

VCT06 Vera

Vera is a complete coffee tables, lamp tables and console collection suitable for yacht as well as for residential lay out. Each item featuring geometrical, squared, or circular wooden top combined with essential cruciform support, is a must-have, easy customizable complement.

MATERIALS

Metals:
 Polished or matt steel 316L
 Steel > high gloss or satin custom colors
 Titanium > high gloss or satin custom colors

Woods:
 Teak > waterseals, oiled, high gloss
 Mahogany > oiled, satin, high gloss
 Custom wood

SIZE

Diameter	60 cm
Height	30 cm

(Custom dimensions on request)





In the picture: VCT06 in black satin mahogany

COFFEE AND LAMP TABLES

VCT07 Vera

Vera is a complete coffee tables, lamp tables and console collection suitable for yacht as well as for residential lay out. Each item featuring geometrical, squared, or circular wooden top combined with essential cruciform support, is a must-have, easy customizable complement.

MATERIALS

Woods:
 Teak > waterseals, oiled, high gloss
 Mahogany > oiled, satin, high gloss
 Custom wood

SIZE

Width	50 cm
Depth	50 cm
Height	50 cm

(Custom dimensions on request)





In the picture: VCT10 in matt steel, custom wood

COFFEE AND LAMP TABLES

VCT10 Vera

Vera is a complete coffee tables, lamp tables and console collection suitable for yacht as well as for residential lay out. Each item, featuring geometrical wooden top combined with essential cruciform support, is an easy customizable complement. A luxury detail in the marquetry top.

MATERIALS

Metals:
 Polished or matt steel 316L
 Steel > high gloss or satin custom colors
 Titanium > high gloss or satin custom colors

Woods:
 Teak > waterseals, oiled, high gloss
 Mahogany > oiled, satin, high gloss
 Custom wood

SIZE

Width	60 cm
Depth	50 cm
Height	45 cm

(Custom dimensions and wooden design marquetry on request)





In the picture: VLT01 detail in stitched leather

COFFEE AND LAMP TABLES

VLT01 Vera

Vera is a complete coffee tables, lamp tables and console collection, suitable for yacht as well as for residential lay out. Each item featuring geometrical wooden top combined with essential cruciform support, is an easy customizable complement. A luxury leather detail.



MATERIALS

Woods:
 Teak > waterseals, oiled, high gloss
 Mahogany > oiled, satin, high gloss
 Custom wood

Soft materials:
 Marine leather > plain, weaved, custom
 Custom leather

SIZE

Diameter	60 cm
Height	60 cm

(Custom dimensions on request)



In the picture: VLT02 in oiled mahogany

COFFEE AND LAMP TABLES

VLT02 Vera

Vera is a complete coffee tables, lamp tables and console collection, suitable for yacht as well as for residential lay out. Each item featuring geometrical wooden top combined with essential cruciform support, is an easy customizable complement to seating corner or sofa lounge.

MATERIALS

Woods:
 Teak > waterseals, oiled, high gloss
 Mahogany > oiled, satin, high gloss
 Custom wood

SIZE

Diameter	45 cm
Height	50 cm

(Custom dimensions on request)



VAAR

BAR CHAIRS

COFFEE AND LAMP TABLES

CONSOLES

DINING CHAIRS

LOUNGE CHAIRS

SOFAS

STOOLS AND OTTOMANS

SUN BEDS



In the picture: VCO01 in black satin mahogany, custom wood

CONSOLES

VCO01 Vera

The console completes Vera collection suitable for yacht as well as for residential layout. Each item, featuring geometrical wooden top combined with essential cruciform support, is an easy customizable complement to dining area and sofa lounge. A luxury detail in the marquetry top.

MATERIALS

Metals:
 Polished or matt steel 316L
 Steel > high gloss or satin custom colors
 Titanium > high gloss or satin custom colors

Woods:
 Teak > waterselas, oil, high gloss
 Mahogany > oil, satin, high gloss
 Custom wood

SIZE

Width	90 cm
Depth	50 cm
Height	70 cm

(Custom dimensions and wooden design marquetry on request)



VAAR

BAR CHAIRS

COFFEE AND LAMP TABLES

CONSOLES

DINING CHAIRS

LOUNGE CHAIRS

SOFAS

STOOLS AND OTTOMANS

SUN BEDS



In the picture: VDC01 in polished steel, waterseals teak, custom fabric

DINING CHAIRS

VDC01 Bellini

The Bellini dining chair is one of Vaar’s most iconic and exclusive products. Its geometrical silhouette is handcrafted in polished steel. The metal back frame and armrests are combined with precious water resistant wooden slats, while the seat and back cushions guarantee complete comfort.

MATERIALS

Metals:
 Polished or matt steel 316L
 Steel > high gloss or satin custom colors
 Titanium > high gloss or satin custom colors

Woods:
 Teak > waterseals, oiled, high gloss
 Mahogany > oiled, satin, high gloss
 Custom wood

Soft materials:
 Marine leather > plain, weaved, custom
 Custom leather
 Custom fabric

SIZE

Width	54 cm
Seat Width	46 cm
Depth	51 cm
Seat Depth	50 cm
Height	85 cm
Seat Height	44 cm
Seat Height with cushion	50 cm
Arm Height	62 cm

(Custom dimensions on request)





In the picture: VDC02 in lacquered titanium, waterseals teak, custom fabric

DINING CHAIRS

VDC02 Colombe

The main characteristic of Colombe design is a folding item with great comfort. The director chair is a Vaar's best seller. The frame is handcrafted in titanium for a lighter option, or in steel. The armrests can be covered in wood and/or stitched leather. Seat and backrest are upholstered in soft material.



MATERIALS

Metals:
 Polished or matt steel 316L
 Steel > high gloss or satin custom colors
 Titanium > high gloss or satin custom colors

Woods:
 Teak > waterseals, oiled, high gloss
 Mahogany > oiled, satin, high gloss
 Custom wood

Soft materials:
 Marine leather > plain, weaved, custom
 Custom leather
 Custom fabric

SIZE

Width	52 cm
Seat Width	49 cm
Folded Width	44.5 cm
Depth	44.5 cm
Seat Depth	43.5 cm
Folded Depth	12 cm
Height	85 cm
Seat Height	44 cm
Seat Height with cushion	49 cm
Arm Height	67 cm
Folded Height	71 cm

(Custom dimensions on request)



In the picture: VDC03 in oiled teak, weaved marine leather

DINING CHAIRS

VDC03 Harem

It's the classical comfortable wood armchair suitable for any dining or coffee table in the yachting environment as well as in the hotels lounges and restaurants, with a marine twist in the weaved leather.

MATERIALS

Woods:
 Teak > waterseals, oiled, high gloss
 Mahogany > oiled, satin, high gloss
 Custom wood

Soft materials:
 Marine leather > plain, weaved, custom
 Custom leather
 Custom fabric

SIZE

Width	61 cm
Seat Width	51 cm
Depth	61 cm
Seat Depth	45 cm
Height	73 cm
Seat Height	41 cm
Seat Height with cushion	47 cm
Arm Height	64 cm

(Custom dimensions on request)





In the picture: VDC04 in black satin mahogany, custom fabric

DINING CHAIRS

VDC04 Salomé

The concept derives from the Belle Époque and the Titanic interiors whose luxury style has a contemporary touch in the Salomé seating. Its wooden sinuous silhouette is an elegant iconic design sign.

MATERIALS

Woods:
 Teak > waterseals, oiled, high gloss
 Mahogany > oiled, satin, high gloss
 Custom wood

Soft materials:
 Marine leather > plain, weaved, custom
 Custom leather
 Custom fabric

SIZE

Width	61 cm
Seat Width	51 cm
Depth	61 cm
Seat Depth	45 cm
Height	73 cm
Seat Height	41 cm
Seat Height with cushion	47 cm
Arm Height	64 cm

(Custom dimensions on request)





In the picture: VCC05 in satin titanium, black satin mahogany, stitched leather, custom fabric

DINING CHAIRS

VDC05 Mazorbo

Mazorbo is the traditional timeless director folding chair with special tailored details, as stitched leather upholstered armrest, weather resistant metal frame, custom color wood varnish and soft materials upholstery. With titanium frame it is a must-have yacht nomadic item.



MATERIALS

Metals:
 Polished or matt steel 316L
 Steel > high gloss or satin custom colors
 Titanium > high gloss or satin custom colors

Woods:
 Teak > waterseals, oiled, high gloss
 Mahogany > oiled, satin, high gloss
 Custom wood

Soft materials:
 Marine leather > plain, weaved, custom
 Custom leather
 Custom fabric

SIZE

Width	53 cm
Seat Width	44.5 cm
Folded Width	46 cm
Depth	46 cm
Seat Depth	43.5 cm
Folded Depth	19 cm
Height	88 cm
Seat Height	48 cm
Arm Height	65 cm
Folded Height	88 cm

(Custom dimensions on request)



In the picture: VDC06 in waterseals teak, polished steel, stitched fabric

DINING CHAIRS

VDC06 Mazorbo

Mazorbo is the traditional timeless director folding chair with special tailored details, as weather resistant metal frame, custom wood finishes and outdoor soft material upholstery, that are the distinguish brand signature. With titanium frame it is a must-have, not only yacht, nomadic item.



MATERIALS

Metals:
 Polished or matt steel 316L
 Steel > high gloss or satin custom colors
 Titanium > high gloss or satin custom colors

Woods:
 Teak > waterseals, oiled, high gloss
 Mahogany > oiled, satin, high gloss
 Custom wood

Soft materials:
 Marine leather > plain, weaved, custom
 Custom leather
 Custom fabric

SIZE

Width	53 cm
Seat Width	44.5 cm
Folded Width	46 cm
Depth	46 cm
Seat Depth	43.5 cm
Folded Depth	19 cm
Height	88 cm
Seat Height	48 cm
Arm Height	65 cm
Folded Height	88 cm

(Custom dimensions on request)



In the picture: VDC07 in waterseals teak, stitched leather, stitched fabric

DINING CHAIRS

VDC07 Mazorbo

Mazorbo is the traditional timeless director folding chair with special tailored details, as the leather upholstered armrests, weather resistant metal frame, custom wood finishes and outdoor soft materials. With titanium frame it is a must-have luxury nomadic item.

MATERIALS

Metals:
 Polished or matt steel 316L
 Steel > high gloss or satin custom colors
 Titanium > high gloss or satin custom colors

Woods:
 Teak > waterseals, oiled, high gloss
 Mahogany > oiled, satin, high gloss
 Custom wood

Soft materials:
 Marine leather > plain, weaved, custom
 Custom leather
 Custom fabric

SIZE

Width	53 cm
Seat Width	44.5 cm
Folded Width	46 cm
Depth	46 cm
Seat Depth	43.5 cm
Folded Depth	19 cm
Height	88 cm
Seat Height	48 cm
Arm Height	65 cm
Folded Height	88 cm

(Custom dimensions on request)





In the picture: VDC08 in waterseals teak, polished steel, stitched leather, stitched fabric

DINING CHAIRS

VDC08 Kalatrava

Kalatrava distinctive signs in the folding director chair are the curved armrest, as well as the essential materials matching: weather resistant wood and metal frame. A luxury touch in the leather upholstered armrests and optional lazy side tray.

MATERIALS

Metals:
 Polished or matt steel 316L
 Steel > high gloss or satin custom colors
 Titanium > high gloss or satin custom colors

Woods:
 Teak > waterseals, oiled, high gloss
 Mahogany > oiled, satin, high gloss
 Custom wood

Soft materials:
 Marine leather > plain, weaved, custom
 Custom leather
 Custom fabric

SIZE

Width	53 cm
Seat Width	44.5 cm
Folded Width	46 cm
Depth	46 cm
Seat Depth	43.5 cm
Folded Depth	19 cm
Height	88 cm
Seat Height	48 cm
Seat Height with cushion	53 cm
Arm Height	65 cm
Folded Height	88 cm

(Custom dimensions on request)





In the picture: VDC09 in polished steel, custom leather

DINING CHAIRS

VDC09 Bellini

The Bellini dining chair is one of Vaar's most iconic and exclusive products. Its geometrical silhouette is handcrafted in metal, the seat cushion, back frame and armrests are upholstered in customized hand-stitched soft material guaranteeing complete comfort.

MATERIALS

Metals:
 Polished or matt steel 316L
 Steel > high gloss or satin custom colors
 Titanium > high gloss or satin custom colors

Soft materials:
 Marine leather > plain, weaved, custom
 Custom leather
 Custom fabric

SIZE

Width	54 cm
Seat Width	46 cm
Depth	51 cm
Seat Depth	50 cm
Height	85 cm
Seat Height	44 cm
Seat Height with cushion	50 cm
Arm Height	62 cm

(Custom dimensions on request)





In the picture: VDC10 in polished steel, waterseals teak, custom fabric

DINING CHAIRS

VDC10 Bellini

The Bellini dining chair is one of Vaar's most iconic and exclusive products. Its geometrical silhouette is handcrafted in metal, seat cushion and back frame are upholstered in customized soft material, with wood armrests.

MATERIALS

Metals:
 Polished or matt steel 316L
 Steel > high gloss or satin custom colors
 Titanium > high gloss or satin custom colors

Woods:
 Teak > waterseals, oiled, high gloss
 Mahogany > oiled, satin, high gloss
 Custom wood

Soft materials:
 Marine leather > plain, weaved, custom
 Custom leather
 Custom fabric

SIZE

Width	54 cm
Seat Width	46 cm
Depth	51 cm
Seat Depth	50 cm
Height	85 cm
Seat Height	44 cm
Seat Height with cushion	50 cm
Arm Height	62 cm

(Custom dimensions on request)





In the picture: VDC11 in oiled wengé, custom fabric

DINING CHAIRS

VDC11 Arpa

Arpa is a contemporary reinterpretation of Josef Hoffmann design furniture. The iconic wooden curved frame is handcrafted in different height slats acting as support, backrest and armrests in the dining chair. Back and seat cushions are upholstered in soft material.

MATERIALS

Woods:

Teak > waterseals, oiled, high gloss
 Mahogany > oiled, satin, high gloss
 Custom wood

Soft materials:

Marine leather > plain, weaved, custom
 Custom leather
 Custom fabric

SIZE

Width	60 cm
Seat Width	48 cm
Depth	51 cm
Seat Depth	48 cm
Height	93 cm
Seat Height	42 cm
Seat Height with cushion	48 cm
Arm Height	64 cm

(Custom dimensions on request)





In the picture: VDC12 in lacquered titanium, waterseals teak, stitched leather

DINING CHAIRS

VDC12 Bellini

The Bellini dining chair is one of Vaar's most iconic and exclusive products. The geometrical silhouette is handcrafted in titanium for a lighter option, or in steel. The seat cushion, back frame and the wood armrests are upholstered in customized soft material.

MATERIALS

Metals:
 Polished or matt steel 316L
 Steel > high gloss or satin custom colors
 Titanium > high gloss or satin custom colors

Woods:
 Teak > waterseals, oiled, high gloss
 Mahogany > oiled, satin, high gloss
 Custom wood

Soft materials:
 Marine leather > plain, weaved, custom
 Custom leather
 Custom fabric

SIZE

Width	54 cm
Seat Width	46 cm
Depth	51 cm
Seat Depth	50 cm
Height	85 cm
Seat Height	44 cm
Seat Height with cushion	50 cm
Arm Height	62 cm

(Custom dimensions on request)





In the picture: VDC13 in polished steel, dark high gloss mahogany, custom fabric

DINING CHAIRS

VDC13 Harman

Essentiality is the concept for Harman collection, that presents linear, squared, handcrafted metal frame in dining chairs, designed for yacht or house interiors. Best comfort guaranteed by the upholstery. The armrests can be covered in wood and/or in stitched leather.

MATERIALS

Metals:
 Polished or matt steel 316L
 Steel > high gloss or satin custom colors
 Titanium > high gloss or satin custom colors

Woods:
 Teak > waterseals, oiled, high gloss
 Mahogany > oiled, satin, high gloss
 Custom wood

Soft materials:
 Marine leather > plain, weaved, custom
 Custom leather
 Custom fabric

SIZE

Width	57.5 cm
Seat Width	47.5 cm
Depth	51 cm
Seat Depth	45.6 cm
Height	86,1 cm
Seat Height	45 cm
Seat Height with cushion	51 cm
Arm Height	64.5 cm

(Custom dimensions on request)





In the picture: VDC14 in black satin mahogany, custom fabric

DINING CHAIRS

VDC14 Salomé

The sinuous silhouette is Salomé dining chair most iconic sign. The essential and elegant handcrafted frame is available in different solid woods and finishes and it is combined with comfortable seat and pillow in custom soft material upholstery.

MATERIALS

Woods:
 Teak > waterseals, oiled, high gloss
 Mahogany > oiled, satin, high gloss
 Custom wood

Soft materials:
 Marine leather > plain, weaved, custom
 Custom leather
 Custom fabric

SIZE

Width	61 cm
Seat Width	51 cm
Depth	61 cm
Seat Depth	45 cm
Height	73 cm
Seat Height	41 cm
Seat Height with cushion	47 cm
Arm Height	64 cm

(Custom dimensions on request)





In the picture: VDC15 in polished steel, custom fabric

DINING CHAIRS

VDC15 Harman

Essentiality is the concept for Harman collection, that presents linear, squared, handcrafted metal frame in dining chairs, designed for yacht or house interiors. Best comfort guaranteed by the upholstery in soft material.

MATERIALS

Metals:
 Polished or matt steel 316L
 Steel > high gloss or satin custom colors
 Titanium > high gloss or satin custom colors

Soft materials:
 Marine leather > plain, weaved, custom
 Custom leather
 Custom fabric

SIZE

Width	47.5 cm
Seat Width	47.5 cm
Depth	51 cm
Seat Depth	45.6 cm
Height	86,1 cm
Seat Height	45 cm
Seat Height with cushion	51 cm
Arm Height	64,5 cm

(Custom dimensions on request)





In the picture: VDC16 in polished steel, waterseals teak, custom fabric

DINING CHAIRS

VDC16 Colombe

A dining chair with backrest made of wooden slats or upholstered in soft material. The seating has steel or lacquered titanium handcrafted frame, armrests covered in wood and/or stitched leather. Soft material upholstery for seat cushion and pillow.

MATERIALS

Metals:
 Polished or matt steel 316L
 Steel > high gloss or satin custom colors
 Titanium > high gloss or satin custom colors

Woods:
 Teak > waterseals, oiled, high gloss
 Mahogany > oiled, satin, high gloss
 Custom wood

Soft materials:
 Marine leather > plain, weaved, custom
 Custom leather
 Custom fabric

SIZE

Width	52 cm
Seat Width	49 cm
Depth	47 cm
Seat Depth	46.5 cm
Height	85 cm
Seat Height	44 cm
Seat Height with cushion	49 cm
Arm Height	67 cm

(Custom dimensions on request)





In the picture: VDC17 in lacquered titanium, stitched leather, custom fabric

DINING CHAIRS

VDC17 Colombe

The Colombe design main characteristic is a folding item with great comfort. The dining chair has a handcrafted metal linear frame. Seat and backrest are conceived as one single piece produced in custom fabric with leather borderline.

MATERIALS

Metals:
 Polished or matt steel 316L
 Steel > high gloss or satin custom colors
 Titanium > high gloss or satin custom colors

Woods:
 Teak > waterseals, oiled, high gloss
 Mahogany > oiled, satin, high gloss
 Custom wood

Soft materials:
 Marine leather > plain, weaved, custom
 Custom leather
 Custom fabric

SIZE

Width	52 cm
Seat Width	49 cm
Folded Width	44.5 cm
Depth	44.5 cm
Seat Depth	43.5 cm
Folded Depth	12 cm
Height	85 cm
Seat Height	44 cm
Seat Height with cushion	49 cm
Arm Height	67 cm
Folded Height	71 cm

(Custom dimensions on request)





In the picture: VDC18 in high gloss ebony macassar, polished steel, custom fabric

DINING CHAIRS

VDC18 Kalatrava

The Kalatrava dining chair features an elegant as essential geometrical design structure, where the curved wooden armrests, the seat and the legs are joined by steel junctions with a modernist decorative effect. Armrests can be covered in stitched leather.

MATERIALS

Metals:
 Polished or matt steel 316L
 Steel > high gloss or satin custom colors
 Titanium > high gloss or satin custom colors

Woods:
 Teak > waterseals, oiled, high gloss
 Mahogany > oiled, satin, high gloss
 Custom wood

Soft materials:
 Marine leather > plain, weaved, custom
 Custom leather
 Custom fabric

SIZE

Width	54 cm
Seat Width	45 cm
Depth	50 cm
Seat Depth	46 cm
Height	87.5 cm
Seat Height	42 cm
Seat Height with cushion	48 cm
Arm Height	65 cm

(Custom dimensions on request)





DINING CHAIRS

VDC19 Explorer

Wood is the protagonist in its essences and fine finishes combined with metal as a structural support. In addition to the polished or matt effects, metals are offered in different satin or glossy paints in match color or contrast with the woods. Padded cushions or a simpler canvas for the backrest.



In the picture: VDC19 in ebony macassar high gloss & metal in ebony macassar high gloss finish

MATERIALS

Metals:
Polished or matt steel 316L
Steel > high gloss or satin custom colors
Titanium > high gloss or satin custom colors

Woods:
Teak > waterseals, oiled, high gloss
Mahogany > oiled, satin, high gloss
Custom wood

Soft materials:
Marine leather > plain, weaved, custom
Custom leather
Custom fabric

SIZE

Width	51 cm
Seat Width	42 cm
Depth	52.3 cm
Seat Depth	47.3 cm
Height	84 cm
Seat Height	41 cm
Seat Height with cushion	49 cm
Arm Height	65 cm

(Custom dimensions on request)



DINING CHAIRS

VDC20 Yasumi

A working progress edition renewing the traditional marine handcrafting furniture using carved wood material and grating combined with metal as structural detail. Steel and titanium can be painted to match or contrast with the various fine woods, as well as being natural with a glossy or matt effect.



In the picture: VDC20 in curved wood and grating in oiled teak. Metal in satin dark mahogany finish

MATERIALS

Metals:
Polished or matt steel 316L
Steel > high gloss or satin custom colors
Titanium > high gloss or satin custom colors

Woods:
Teak > waterseals, oiled, high gloss
Mahogany > oiled, satin, high gloss
Custom wood

Soft materials:
Marine leather > plain, weaved, custom
Custom leather
Custom fabric

SIZE

Width	52.4 cm
Seat Width	43.4 cm
Depth	52 cm
Seat Depth	47 cm
Height	81.2 cm
Seat Height	41 cm
Seat Height with cushion	49 cm
Arm Height	65 cm

(Custom dimensions on request)

VAAR

BAR CHAIRS

COFFEE AND LAMP TABLES

CONSOLES

DINING CHAIRS

LOUNGE CHAIRS

SOFAS

STOOLS AND OTTOMANS

SUN BEDS



In the picture: VLC01 in black satin mahogany, custom fabric

LOUNGE CHAIRS

VLC01 Salomé

The sinuous silhouette is the Salomé lounge chair most iconic sign. The essential and elegant handcrafted wooden frame is combined with comfortable seat and pillow in customized soft material upholstery.

MATERIALS

Woods:
 Teak > waterseals, oiled, high gloss
 Mahogany > oiled, satin, high gloss
 Custom wood

Soft materials:
 Marine leather > plain, weaved, custom
 Custom leather
 Custom fabric

SIZE

Width	73 cm
Seat Width	64 cm
Depth	90 cm
Seat Depth	60.5 cm
Height	74 cm
Seat Height	23 cm
Seat Height with cushion	33 cm
Arm Height	62 cm

(Custom dimensions on request)





In the picture: VLC03 in black satin mahogany, custom fabric

LOUNGE CHAIRS

VLC03 Arpa

The curved wooden frame with the same height slats acting as support, backrest and armrest is a tribute to Josef Hoffmann. The customizable woods, finishes and soft material upholstery, makes the lounge chair an extraordinary item.

MATERIALS

Woods:
 Teak > waterseals, oiled, high gloss
 Mahogany > oiled, satin, high gloss
 Custom wood

Soft materials:
 Marine leather > plain, weaved, custom
 Custom leather
 Custom fabric

SIZE

Width	86 cm
Seat Width	63 cm
Depth	64 cm
Seat Depth	63 cm
Height	76 cm
Seat Height	29 cm
Seat Height with cushion	39 cm
Arm Height	76 cm

(Custom dimensions on request)





LOUNGE CHAIRS

In the picture: VLC04 in black satin mahogany, custom fabric

VLC04 Poppey

The lounge chair is an iconic, extraordinary handcrafted item. The design is Josef Hoffmann reinterpretation and the art of carving is at top: curved horizontal and vertical slats are matched with solid wood in a continuous frame acting as armrest, backrest and support. Cushions in customized soft material.

MATERIALS

Woods:

Teak > waterseals, oiled, high gloss
 Mahogany > oiled, satin, high gloss
 Custom wood

Soft materials:

Marine leather > plain, weaved, custom
 Custom leather
 Custom fabric

SIZE

Width	77.5 cm
Seat Width	65.5 cm
Depth	81 cm
Seat Depth	58.4 cm
Height	81.5 cm
Seat Height	28 cm
Seat Height with cushion	38 cm
Arm Height	60 cm

(Custom dimensions on request)





In the picture: VLC05 in polished steel, stitched leather, custom fabric

LOUNGE CHAIRS

VLC05 Hilary

Bauhaus modernism is the design reference for Hilary's seamless metal frame: the furniture signature in the bar chair, the lounge chair and the ottoman. The metal backrest and armrests can be covered in wood or upholstered in soft material.

MATERIALS

Metals:
 Polished or matt steel 316L
 Steel > high gloss or satin custom colors
 Titanium > high gloss or satin custom colors

Woods:
 Teak > waterseals, oiled, high gloss
 Mahogany > oiled, satin, high gloss
 Custom wood

Soft materials:
 Marine leather > plain, weaved, custom
 Custom leather
 Custom fabric

SIZE

Width	67 cm
Seat Width	58 cm
Depth	71 cm
Seat Depth	69 cm
Height	87 cm
Seat Height	38 cm
Seat Height with cushion	48 cm
Arm Height	60 cm

(Custom dimensions on request)





In the picture: VLC06 in oiled teak, matt steel, custom fabric

LOUNGE CHAIRS

VLC06 Yasumi

Yasumi reclining lounge chair renews the traditional marine handcrafting furniture, using wood as structural material, grating as iconic craftwork, metal as details. Alternatively, the grating backrest and seat can be replaced with wooden slats.

MATERIALS

Metals:
 Polished or matt steel 316L
 Steel > high gloss or satin custom colors
 Titanium > high gloss or satin custom colors

Woods:
 Teak > waterseals, oiled, high gloss
 Mahogany > oiled, satin, high gloss
 Custom wood

Soft materials:
 Marine leather > plain, weaved, custom
 Custom leather
 Custom fabric

SIZE

Width	52 cm
Seat Width	52 cm
Depth	102 cm
Seat Depth	55 cm
Height	68 cm
Seat Height	9 cm
Seat Height with cushion	26 cm

(Custom dimensions on request)





In the picture: VLC07 in polished steel, high gloss ebony macassar, stitched leather

LOUNGE CHAIRS

VLC07 Kalatrava

The crossing of two curved lines - one for the steel seamless support with armrests and the other for the wooden seat - is the design concept for the Kalatrava lounge chair. Armrests can be covered in wood or stitched leather, cushions are upholstered in soft material.

MATERIALS

Metals:
 Polished or matt steel 316L
 Steel > high gloss or satin custom colors
 Titanium > high gloss or satin custom colors

Woods:
 Teak > waterseals, oiled, high gloss
 Mahogany > oiled, satin, high gloss
 Custom wood

Soft materials:
 Marine leather > plain, weaved, custom
 Custom leather
 Custom fabric

SIZE

Width	68 cm
Seat Width	58 cm
Depth	105 cm
Seat Depth	60 cm
Height	75 cm
Seat Height	23 cm
Seat Height with cushion	36 cm
Arm Height	50 cm

(Custom dimensions on request)





In the picture: VLC08 in white satin mahogany & titanium in grey satin finish

LOUNGE CHAIRS

VLC08 Explorer

Wood is the protagonist in its essences and fine finishes combined with metal as a structural support. In addition to the polished or matt effects, metals are offered in different satin or glossy paints in match color or contrast with the woods. Padded cushions or a simpler canvas for the backrest.



MATERIALS

Metals:
 Polished or matt steel 316L
 Steel > high gloss or satin custom colors
 Titanium > high gloss or satin custom colors

Woods:
 Teak > waterseals, oiled, high gloss
 Mahogany > oiled, satin, high gloss
 Custom wood

Soft materials:
 Marine leather > plain, weaved, custom
 Custom leather
 Custom fabric

SIZE

Width	75 cm
Seat Width	65 cm
Depth	79 cm
Seat Depth	73 cm
Height	87.5 cm
Seat Height	25 cm
Seat Height with cushion	36 cm
Arm Height	60 cm

(Custom dimensions on request)

VAAR

BAR CHAIRS

COFFEE AND LAMP TABLES

CONSOLES

DINING CHAIRS

LOUNGE CHAIRS

SOFAS

STOOLS AND OTTOMANS

SUN BEDS



In the picture: VSO01 in black satin mahogany, custom fabric

SOFAS

VSO01 Arpa

The curved carpentry frame with same height slats, acting as support, backrest and armrest is a tribute to Josef Hoffmann. Ebony, mahogany or teak in the best quality makes the sofa an extraordinary item.

MATERIALS

Woods:
 Teak > waterseals, oiled, high gloss
 Mahogany > oiled, satin, high gloss
 Custom wood

Soft materials:
 Marine leather > plain, weaved, custom
 Custom leather
 Custom fabric

SIZE

Width	150 cm
Seat Width	147 cm
Depth	64 cm
Seat Depth	63 cm
Height	76 cm
Seat Height	29 cm
Seat Height with cushion	39 cm
Arm Height	76 cm

(Custom dimensions on request)





In the picture: VSO02 in high gloss teak, custom fabric

SOFAS

VSO02 Salomé

The plain wood sinuous silhouette is the Salomé sofa most iconic design sign. The essential and elegant handcrafted frame is combined with comfortable upholstered seat and pillow.

MATERIALS

Woods:
 Teak > waterseals, oiled, high gloss
 Mahogany > oiled, satin, high gloss
 Custom wood

Soft materials:
 Marine leather > plain, weaved, custom
 Custom leather
 Custom fabric

SIZE

Width	158 cm
Seat Width	149 cm
Depth	91.5 cm
Seat Depth	68 cm
Height	76 cm
Seat Height	23 cm
Seat Height with cushion	33 cm
Arm Height	62 cm

(Custom dimensions on request)





In the picture: VSO03 in dark high gloss mahogany, custom fabric

SOFAS

VSO03 Harman

Essentiality is the concept for Harman collection, that presents linear, squared, handcrafted wooden frame in corner sofas and sun beds, designed for yacht or house interiors. Best comfort is guaranteed by the soft material upholstery.

MATERIALS

Woods:
 Teak > waterseals, oiled, high gloss
 Mahogany > oiled, satin, high gloss
 Custom wood

Soft materials:
 Marine leather > plain, weaved, custom
 Custom leather
 Custom fabric

SIZE

Total Width	210 cm
Corner piece Width	130 cm
Seat Total Width	210 cm
Corner piece Seat Width	130 cm
Depth	76 cm
Seat Depth	70 cm
Height	72 cm
Seat Height	11 cm
Seat Height with cushion	31 cm

(Custom dimensions on request)





In the picture: VSO04 in dark high gloss mahogany, custom fabric

SOFAS

VSO04 Harman

Essentiality is the concept for Harman collection, that presents linear, squared, handcrafted wooden frame in corner sofas and sun beds, designed for yacht or house interiors. Armrests are covered in stitched leather. Best comfort is guaranteed by the soft material upholstery.



MATERIALS

Woods:

Teak > waterseals, oiled, high gloss
 Mahogany > oiled, satin, high gloss
 Custom wood

Soft materials:

Marine leather > plain, weaved, custom
 Custom leather
 Custom fabric

SIZE

Total Width	210 cm
Corner piece Width	140 cm
Seat Total Width	200 cm
Corner piece Seat Width	130 cm
Depth	76 cm
Seat Depth	70 cm
Height	72 cm
Seat Height	23 cm
Seat Height with cushion	39 cm
Arm Height	62 cm

(Custom dimensions on request)

VAAR

BAR CHAIRS

COFFEE AND LAMP TABLES

CONSOLES

DINING CHAIRS

LOUNGE CHAIRS

SOFAS

STOOLS AND OTTOMANS

SUN BEDS



In the picture: VST01 in polished steel, stitched leather

STOOLS AND OTTOMANS

VST01 Colombre

This simple but luxury foldable stool, is a must-have complement for everyplace in the yachting interiors and exteriors, in the hotel lounge or in private houses. It is flexible, light and useful as well as preciously handcrafted. The stool is covered in leather or custom fabric.

MATERIALS

Metals:
 Polished or matt steel 316L
 Steel > high gloss or satin custom colors
 Titanium > high gloss or satin custom colors

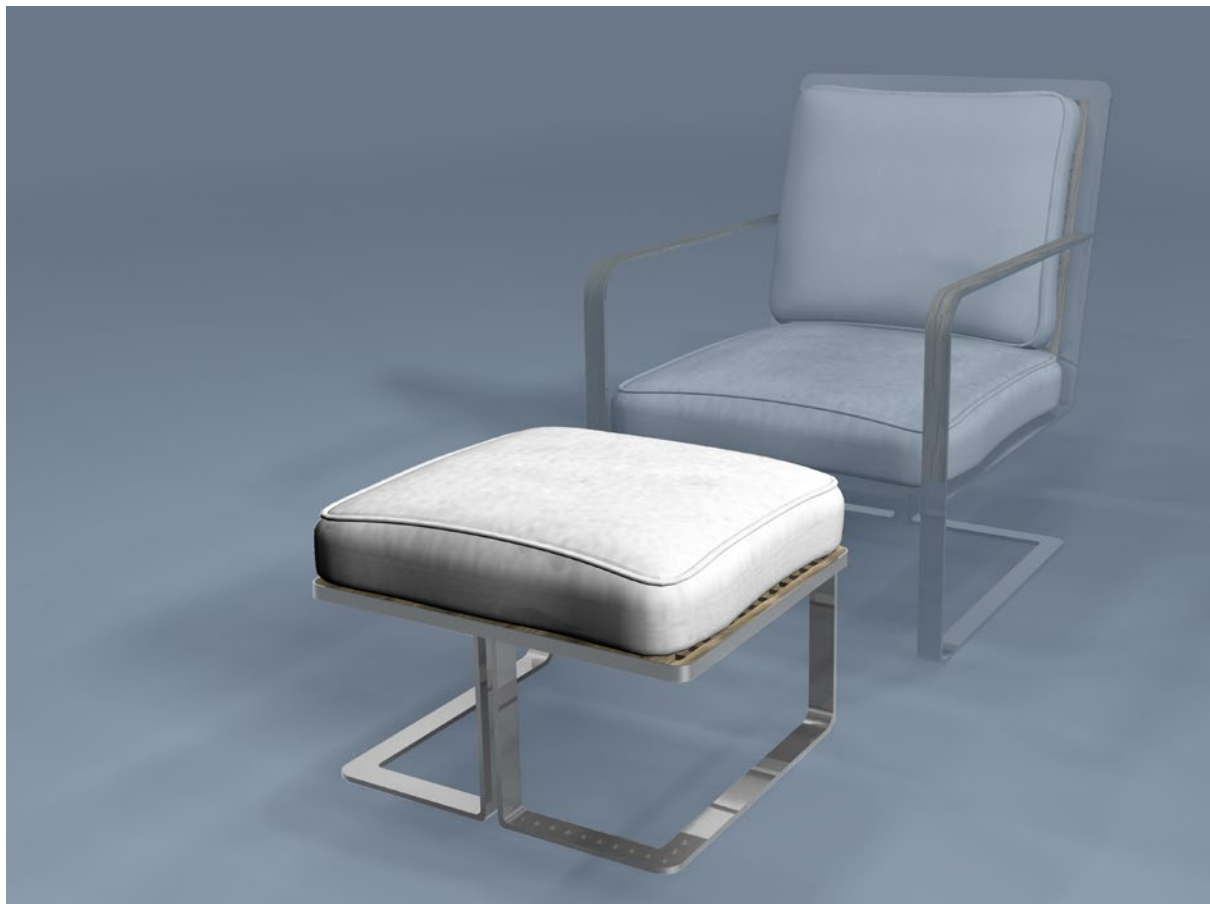
Soft materials:
 Marine leather > plain, weaved, custom
 Custom leather
 Custom fabric

SIZE

Width	55 cm
Folded Width	45 cm
Depth	45 cm
Folded Depth	8 cm
Height	44 cm
Folded Height	71 cm

(Custom dimensions on request)





In the picture: VOT01 in polished steel, custom fabric

STOOLS AND OTTOMANS

VOT01 Hilary

Bauhaus modernism is the design reference for Hilary's seamless metal frame: the furniture signature in the bar chair, the lounge chair and the ottoman. Seating comfort is assured by the soft material upholstery.

MATERIALS

Metals:
 Polished or matt steel 316L
 Steel > high gloss or satin custom colors
 Titanium > high gloss or satin custom colors

Woods:
 Teak > waterseals, oiled, high gloss
 Mahogany > oiled, satin, high gloss
 Custom wood

Soft materials:
 Marine leather > plain, weaved, custom
 Custom leather
 Custom fabric

SIZE

Width	60 cm
Depth	47 cm
Height	38 cm

(Custom dimensions on request)



VAAR

BAR CHAIRS

COFFEE AND LAMP TABLES

CONSOLES

DINING CHAIRS

LOUNGE CHAIRS

SOFAS

STOOLS AND OTTOMANS

SUN BEDS



In the picture: VSB01 in oiled teak, polished steel, custom fabric

SUN BEDS

VSB01 Burano

The grating base is the Burano design file rouge in the reclining and stacking sun bed, combined with two curvilinear metal supports acting also as armrests. Soft material upholstery for mattress and headrest.

MATERIALS

Metals:
 Polished or matt steel 316L
 Steel > high gloss or satin custom colors
 Titanium > high gloss or satin custom colors

Woods:
 Teak > waterseals, oiled, high gloss
 Mahogany > oiled, satin, high gloss
 Custom wood

Soft materials:
 Marine leather > plain, weaved, custom
 Custom leather
 Custom fabric

SIZE

Width	206 cm
Seat Width	206 cm
Depth	78 cm
Seat Depth	68 cm
Height	28.5 cm
Seat Height	19 cm
Seat Height with cushion	25 cm
Arm Height	28.5 cm

(Custom dimensions on request)





In the picture: VSB03 in waterseals teak, polished steel

SUN BEDS

VSB03 Kalatrava

The seamless steel structural arch as sunbed support and armrest is the Kalatrava distinctive signature as well as the choice of essential materials: weather resistant wood in the reclinable base, regular crafted slats, outdoor soft material in the provided mattress.

MATERIALS

Metals:
 Polished or matt steel 316L
 Steel > high gloss or satin custom colors
 Titanium > high gloss or satin custom colors

Woods:
 Teak > waterseals, oiled, high gloss
 Mahogany > oiled, satin, high gloss
 Custom wood

Soft materials:
 Marine leather > plain, weaved, custom
 Custom leather
 Custom fabric

SIZE

Width	206 cm
Seat Width	206 cm
Depth	77 cm
Seat Depth	68 cm
Height	28.5 cm
Seat Height	18 cm
Seat Height with cushion	25 cm

(Custom dimensions on request)





In the picture: VSB07 in black satin mahogany, polished steel, custom fabric

SUN BEDS

VSB07 Salomé

The concept derives from the Titanic furniture whose luxury style has a contemporary touch in the Salomé reclinable stacking sunbed. The essential, elegant wooden frame and metal support, matched with a comfortable outdoor fabric make it a real must-have. Optional pad/mattress is available.

MATERIALS

Metals:
 Polished or matt steel 316L
 Steel > high gloss or satin custom colors
 Titanium > high gloss or satin custom colors

Woods:
 Teak > waterseals, oiled, high gloss
 Mahogany > oiled, satin, high gloss
 Custom wood

Soft materials:
 Marine leather > plain, weaved, custom
 Custom leather
 Custom fabric

SIZE

Width	206 cm
Seat Width	206 cm
Depth	80 cm
Seat Depth	70 cm
Height	28.5 cm
Seat Height	19 cm
Seat Height with cushion	22 cm
Arm Height	28.5 cm

(Custom dimensions on request)





In the picture: VSB08 in waterseals teak, polished steel, custom fabric

SUN BEDS

VSB08 Bellini

The reclining, stacking Bellini sun bed is the indispensable item for achieving an integral exclusive luxury style both above and below deck. The seamless wood-covered metal frame, acting as support and armrests, is the distinctive sign. Optional pad/mattress is available.

MATERIALS

Metals:
 Polished or matt steel 316L
 Steel > high gloss or satin custom colors
 Titanium > high gloss or satin custom colors

Woods:
 Teak > waterseals, oiled, high gloss
 Mahogany > oiled, satin, high gloss
 Custom wood

Soft materials:
 Marine leather > plain, weaved, custom
 Custom leather
 Custom fabric

SIZE

Width	206 cm
Seat Width	206 cm
Depth	80 cm
Seat Depth	70 cm
Height	28.5 cm
Seat Height	19 cm
Seat Height with cushion	22 cm
Arm Height	28.5 cm

(Custom dimensions on request)





In the picture: VSB09 in waterseals teak, polished steel, custom fabric

SUN BEDS

VSB09 Colombe

Reclinable but easily movable and storable, thanks to its folding metal support, Colombe sun bed is the perfect matching between extraordinarily and functionality using a perfect combination of metal, wood and outdoor soft material. Optional pad/mattress is available.



MATERIALS

Metals:
 Polished or matt steel 316L
 Steel > high gloss or satin custom colors
 Titanium > high gloss or satin custom colors

Woods:
 Teak > waterseals, oiled, high gloss
 Mahogany > oiled, satin, high gloss
 Custom wood

Soft materials:
 Marine leather > plain, weaved, custom
 Custom leather
 Custom fabric

SIZE

Width	206 cm
Seat Width	206 cm
Folded Width	206 cm
Depth	70 cm
Seat Depth	70 cm
Folded Depth	12 cm
Height	24 cm
Seat Height	24 cm
Seat Height with cushion	27 cm
Folded Height	70 cm

(Custom dimensions on request)



In the picture: VSB10 in waterseals teak, polished steel

SUN BEDS

VSB10 Yasumi

Yasumi renews the traditional marine handcrafting furniture, using wood as structure material, grating as craftwork, metal as details. The reclining sun bed signature lies in the combination of the wooden grating base and the functional, essential metal. Seat with wooden slats is available. Mattress is provided.



MATERIALS

Metals:
 Polished or matt steel 316L
 Steel > high gloss or satin custom colors
 Titanium > high gloss or satin custom colors

Woods:
 Teak > waterseals, oiled, high gloss
 Mahogany > oiled, satin, high gloss
 Custom wood

Soft materials:
 Marine leather > plain, weaved, custom
 Custom leather
 Custom fabric

SIZE

Width	206 cm
Seat Width	206 cm
Depth	70 cm
Seat Depth	70 cm
Height	24 cm
Seat Height	24 cm
Seat Height with cushion	30 cm

(Custom dimensions on request)



In the picture: VSB11 in polished steel, oiled teak, custom fabric

SUN BEDS

VSB11 Harman

Essentiality is the concept for Harman collection, that presents linear, squared, handcrafted wooden frame in sun beds and sofas. The reclining sun bed has metal support and metal bordered wooden base with outdoor fabric upholstery. Optional pad/mattress is available.

MATERIALS

Metals:
 Polished or matt steel 316L
 Steel > high gloss or satin custom colors
 Titanium > high gloss or satin custom colors

Woods:
 Teak > waterseals, oiled, high gloss
 Mahogany > oiled, satin, high gloss
 Custom wood

Soft materials:
 Marine leather > plain, weaved, custom
 Custom leather
 Custom fabric

SIZE

Width	206 cm
Seat Width	206 cm
Depth	70 cm
Seat Depth	70 cm
Height	24 cm
Seat Height	24 cm
Seat Height with cushion	27 cm

(Custom dimensions on request)





In the picture: VSB12 in oiled mahogany, polished steel, custom fabric

SUN BEDS

VSB12 Harman

Essentiality is the concept for Harman collection, that presents linear, squared, handcrafted wooden frame in sun beds and sofas. The sun bed has a metal support and a reclining wooden base with outdoor fabric upholstery as comfort guarantee. Optional pad/mattress is available.

MATERIALS

Metals:
 Polished or matt steel 316L
 Steel > high gloss or satin custom colors
 Titanium > high gloss or satin custom colors

Woods:
 Teak > waterselas, oiled, high gloss
 Mahogany > oiled, satin, high gloss
 Custom wood

Soft materials:
 Marine leather > plain, weaved, custom
 Custom leather
 Custom fabric

SIZE

Width	206 cm
Seat Width	206 cm
Depth	70 cm
Seat Depth	70 cm
Height	31 cm
Seat Height	31 cm
Seat Height with cushion	34 cm

(Custom dimensions on request)



MATERIALS & FINISHES

The continuous searching for high quality and outdoor resistant materials and finishes is a brand's prerogative. The ability to customize each single product ensures a strong disposition on experimenting new materials, while the capacity to finalize special finishes in bespoke projects is the company's strongest asset.



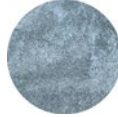
METALS

-  Polished steel 316L
-  Matt steel 316L
-  Titanium > Grey High Gloss
-  Metal > Grey Satin
-  Metal > Dark High Gloss

WOODS

-  Teak > waterseals
-  Teak > oiled
-  Teak > high gloss
-  Mahogany > oiled
-  Mahogany > white satin
-  Mahogany > white high gloss
-  Mahogany > black satin
-  Mahogany > black high gloss
-  Mahogany > dark high gloss
-  Ebony macassar > high gloss
-  Grating
-  Marquetry

STONES

-  Belgian black marble
-  Lavagna stone
-  Cardoso stone

SOFT MATERIALS

-  Marine leather > plain
-  Marine leather > weaved
-  Fabric > on choice

V A A R

VAAR sarl

9, Rue des Oliviers - 98000 Monaco

www.vaar.mc

T +377 97981019

M +377 640619901

info@vaar.mc

-

Graphic design:
Stefania Giarlotta

Photos:
Albrecht Tübke

Texts:
Giovanna Tissi

